



Super-PTT APP Operation Manual

(Edition: 002)

July 2025

Shenzhen Bonard Information Technology Co., Ltd.

KANGGLONG[®]
Two-Way Radio Manufacturer



catalogue

Chapter 1 Login 1.....	1
1.1 Direct Authorization Login 1.....	1
1.2 Email Login 2.....	2
1.2.1 Registration 2.....	2
1.2.2 Login 4.....	4
1.3 Forgot Password 6.....	6
Chapter 2 Terminal 7.....	7
2.1 Terminal Binding 7.....	7
2.1.1 Add terminals by model 7.....	7
2.1.2 Scan to add terminal 9.....	9
2.1.3 Mandatory Terminal Binding 10.....	10
2.2 Terminal Operations 11.....	11
2.2.1 Modify Terminal Name 11.....	11
2.2.2 Help Terminal Create Groups 12.....	12
2.2.3 Help the terminal join group 13.....	13
2.2.4 Terminal Location 15.....	15
2.2.5 Multi-group voice listening 16.....	16
2.2.6 Help Terminal Update Version 18.....	18
2.2.7 Last Position 19.....	19
2.2.8 Remove from current group 20.....	20
2.2.9 Disband the current group 21.....	21
2.2.10 Unbinding 22.....	22
Chapter 3: Groups 23.....	23
3.1 New Group 23.....	23
3.2 Join Group 25.....	25
3.3 Scan QR Code to Join Group 26.....	26

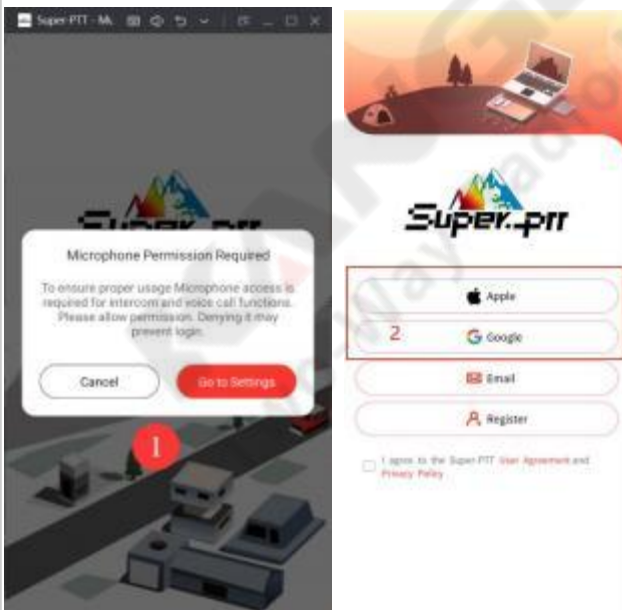
3.4 Join Group 27.....	27
3.4.1 Group Code 27.....	27
3.4.2 Hold your breath while speaking 28.....	28
3.4.3 Voice Call 29.....	29
3.4.4 Voice Playback 31.....	31
3.4.5 Chat Information 32.....	32
3.5 Equipment Switching 43.....	43
3.6 Group Operations 43.....	43
Chapter 4 Location 45.....	45
4.1 Position 45.....	45
4.2 Switch to display member location 47.....	47
4.3 Other Information 48.....	48
Chapter 5 Settings 49.....	49
5.1 Location 49.....	49
5.2 Editing Materials 50.....	50
5.3 Switching Region 51.....	51
5.4 User Agreement and Other Terms 53.....	53
5.5 Update Detection 55.....	55
5.6 Regarding 56.....	56
5.7 Account Cancellation 57.....	57
5.8 Log Out 58.....	58

Chapter 1 Login

1.1 Direct login authorization

Note: First-time users of Super-PTT must download the mobile app to register, with all permissions enabled.

First Steps :	Download and install Super-PTT on your phone, then grant microphone access
the second step :	Check to agree to the User Agreement and Privacy Policy
the third step :	The third party completes authorization, and the system automatically registers an account and logs in.

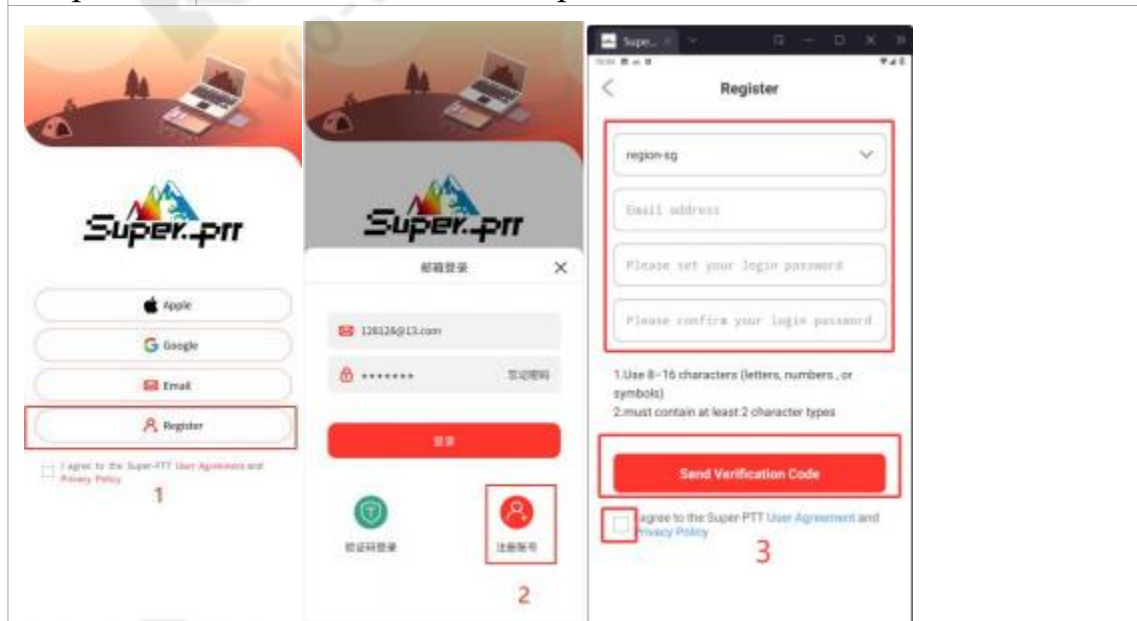


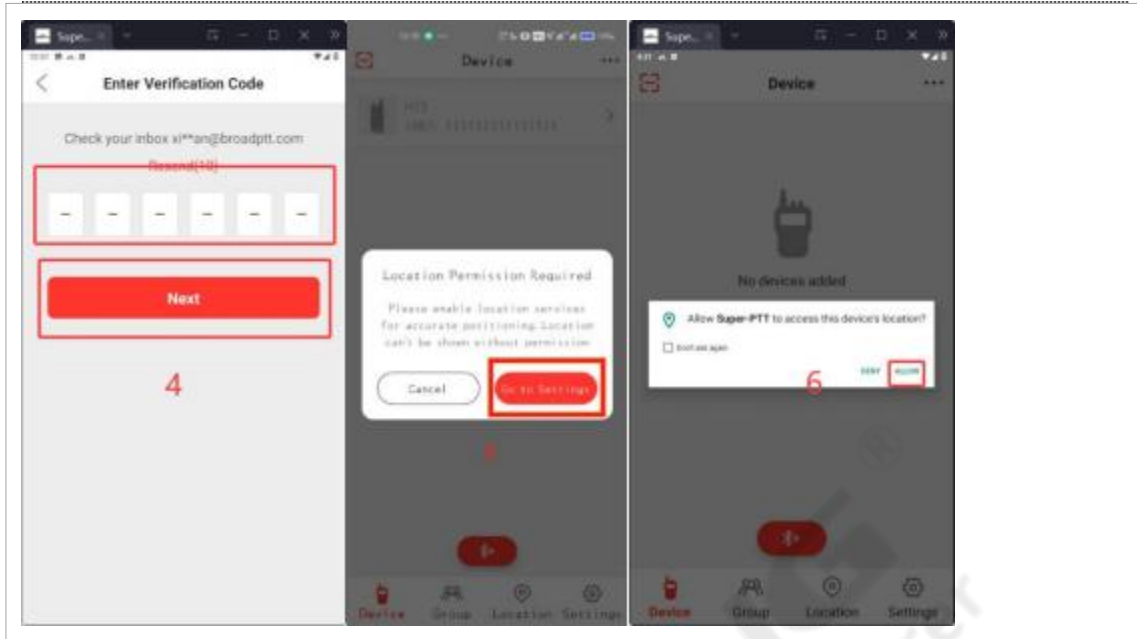
1.2 Email Login

1.2.1 Registration

Note: To log in to Super-PTT with an email account, you must complete registration first.

First Steps :	Download and install Super-PTT on your phone, then grant microphone access
the second step :	Click to register
the third step :	Check the User Agreement, select your registration region, enter your email address and password, then click Send Verification Code
Step 4:	Enter the received verification code and click Next to register. After registration, you can log in directly to the main interface (for the next login, enter your email and password, or email + verification code).
Step 5:	Accessing the main interface requires location permissions for map functionality.
Step 6:	Click to allow location permissions






KANGLON
Two-Way Radio Manufacturer

1.2.2 Login

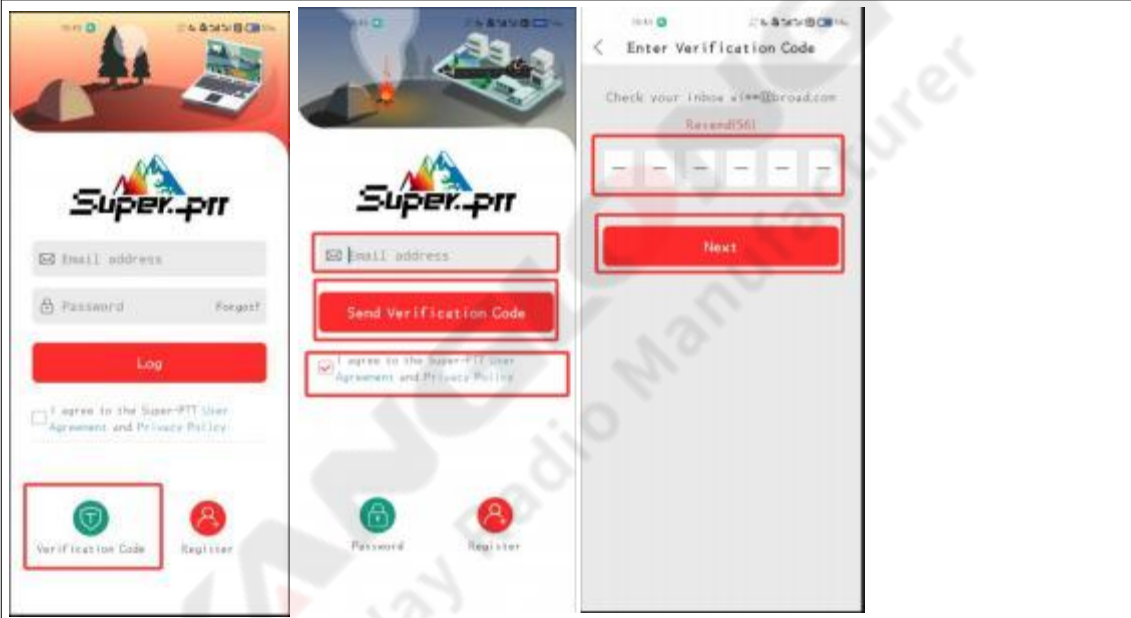
After registration, you can log in with your email and password or email and verification code.

1.2.2.1. Method 1: Email + Password

First Steps :	After registration, you can log in directly with your email and password next time.
the second step :	Check to agree to the user agreement and privacy policy
thethird step :	Click to sign in
	

1.2.2.2. Method Two: Email + Verification Code

First Step :	After registration, you can click the verification code login button for your next login
the second step :	Enter your email address, check the User Agreement and Privacy Policy, and click Send Verification Code
the third step :	Enter the verification code received in the email and click Next to complete



1.3 Forgot password

Note: If you forget your password or need to change it, you can reset it.

First Steps :	Click to forget password
the second step :	Enter your email address and click Next
the third step :	Enter the received verification code and click Next
Step 4:	Set a new password




Chapter 2 Terminal

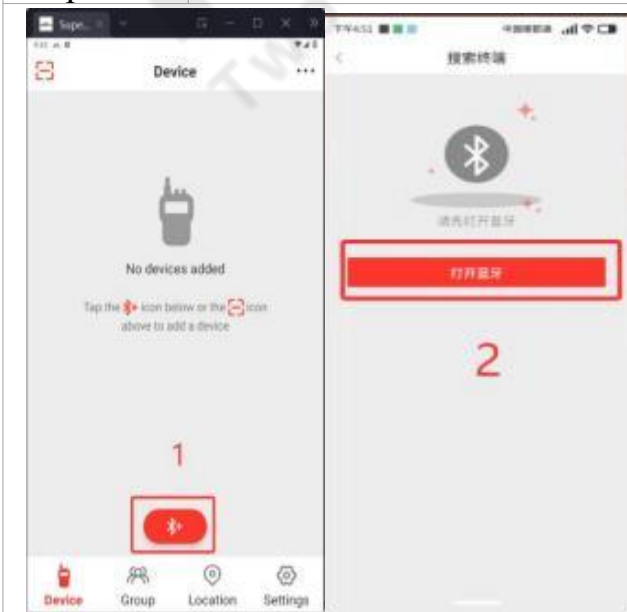
Note: The terminal page can bind a device. The terminal details page displays the device's name, IMEI, ICCID, and other information. APP users can modify the device name, toggle the device location, create groups, and add listening groups on this page.

2.1 Terminal Binding

2.1.1 Add terminals by model

Note: APP users can add devices by model.

First Steps :	drop 
the second step :	If Bluetooth is not turned on, turn it on
the third step :	Select a terminal model from the list or search by name/model Added terminal
Step 4:	Select a terminal derived from a column



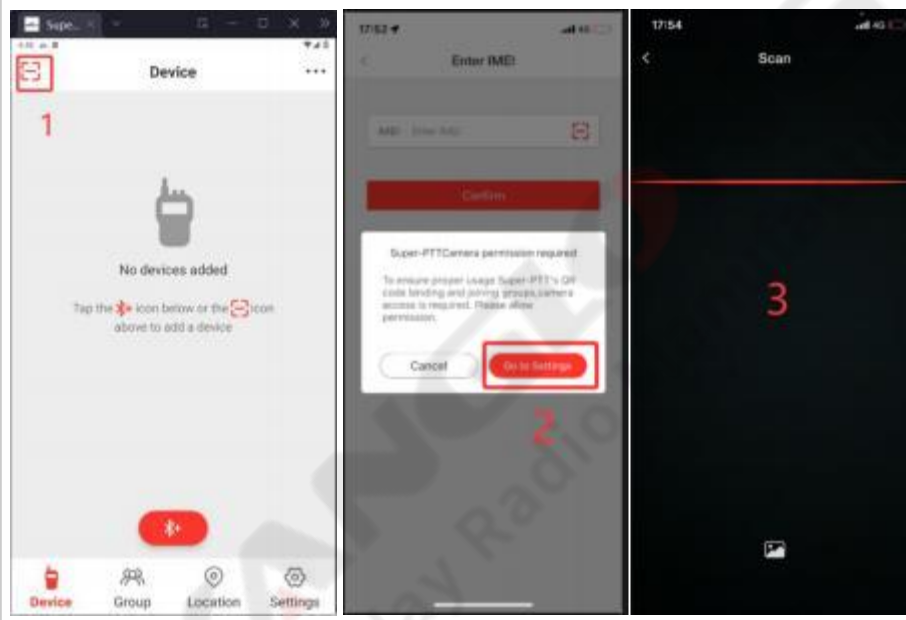


KANGLONG[®]
Two-Way Radio Manufacturer

2.1.2 Scan to add terminal

Note: APP users can scan the QR code to add terminal devices.

First Step :	Click the QR code button in the top-left corner of the page
the second step :	Enable photo and video access
the third step :	Enter the IMEI number manually or scan the QR code to bind the device



2.1.3 Mandatory Terminal Binding

Note: If the added device is already bound, the APP user can force it to bind to their account. (Binding devices from other regions will force the device's region to switch to the current APP region before binding.)

First Steps :	Confirm to force binding
the second step :	Enter the verification code received from the email associated with the device bound to this terminal to complete

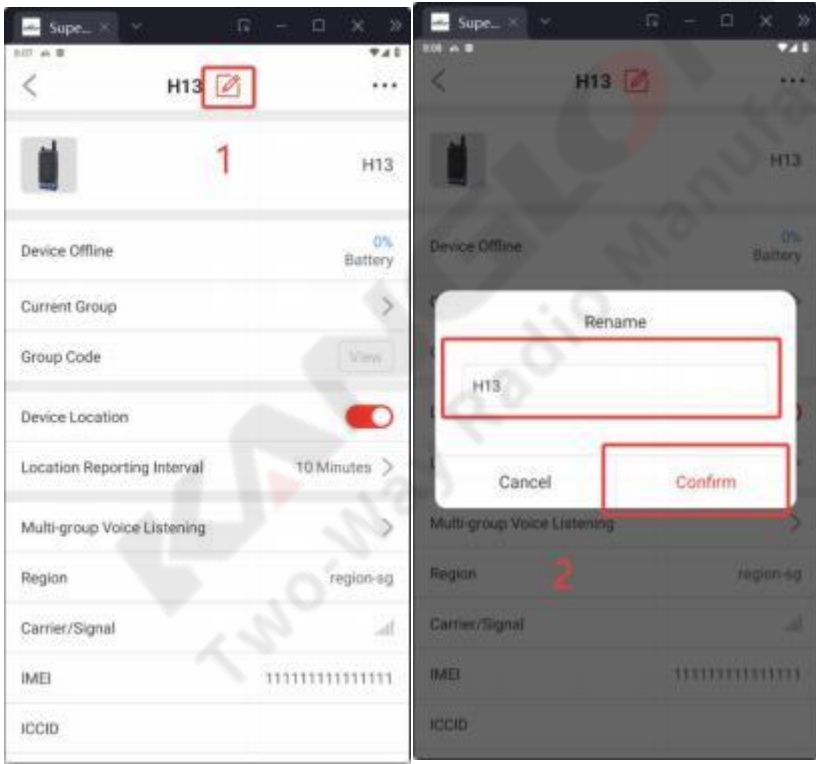


2.2 Terminal Operation

2.2.1 Modify terminal name

Note: APP users can modify the device name as needed.

operating steps :

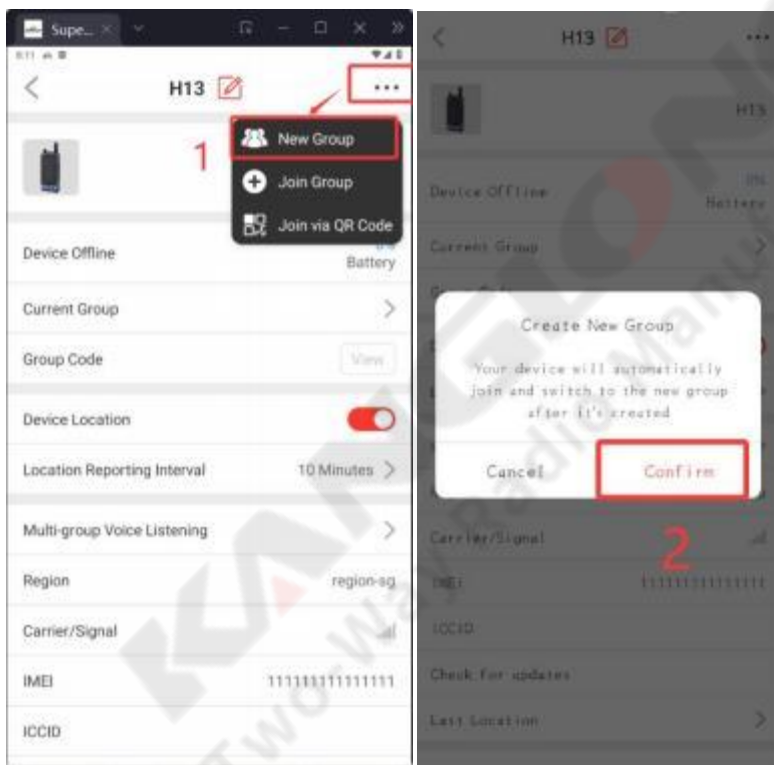
First Steps :	Click the modification button for terminal details
the second step :	Enter a new name in the pop-up box (follow the gray text instructions)
	

2.2.2 Create a group for the assistant terminal

Note: APP users can create groups for devices.

operating steps :

First Steps :	Click the top-right corner..., then click Create Group
the second step :	Click Create Group in the pop-up window to create a group for the terminal.

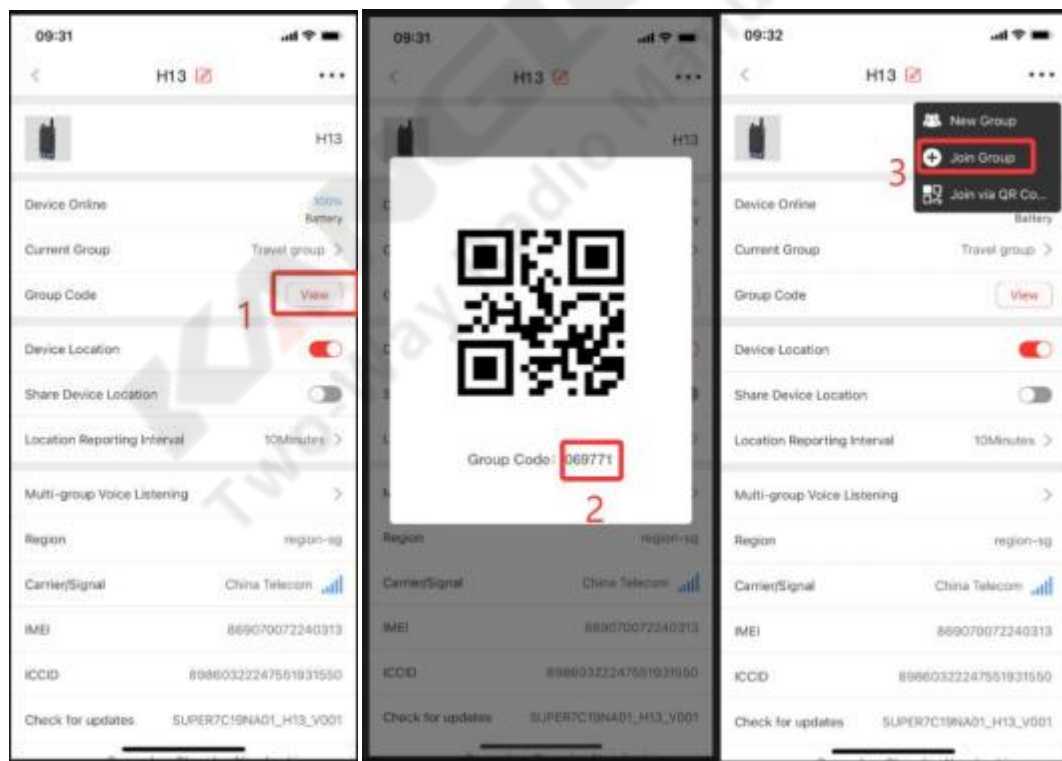


2.2.3 Help the terminal join the group

Note: APP users can join other groups by entering the group ID.

operating steps :

First Steps :	View the group ID in the first terminal (the group code updates every 10 minutes)
the second step :	View and record group IDs
the third step :	Click the top-right corner of the ... second terminal and select Join Group
the third step :	Enter the group ID in the pop-up to join the first shared group





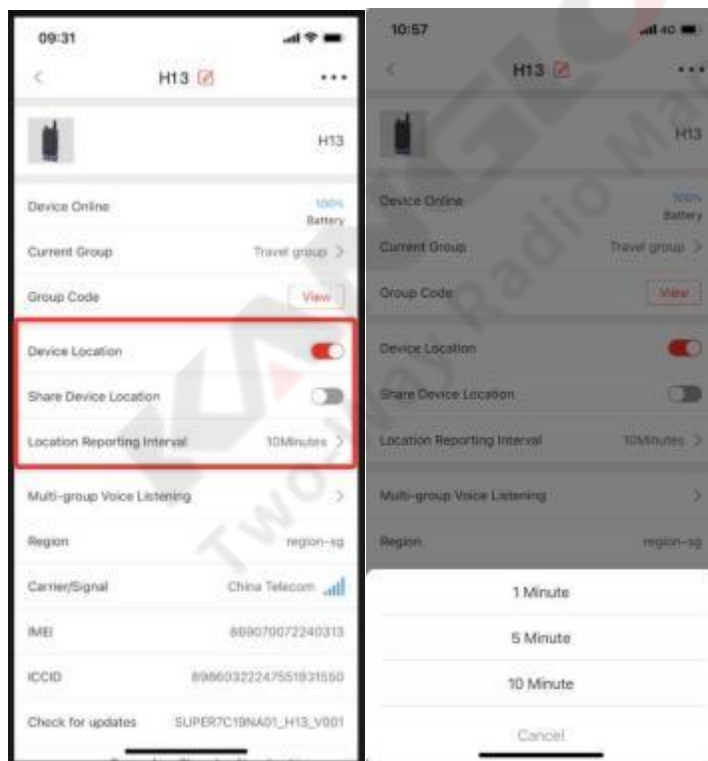
KANGGLONG®
Two-Way Radio Manufacturer

2.2.4 Terminal Location

Note: APP users can enable or disable device location and location sharing, and set the location reporting interval. (The device must have location permissions enabled)

operating steps :

Terminal position switch:	Enable or disable device location
Terminal location sharing:	Enable or disable device location sharing (location sharing requires the location switch to be turned on)
Location report interval:	You can set the terminal location to report every 1, 5, or 10 minutes.



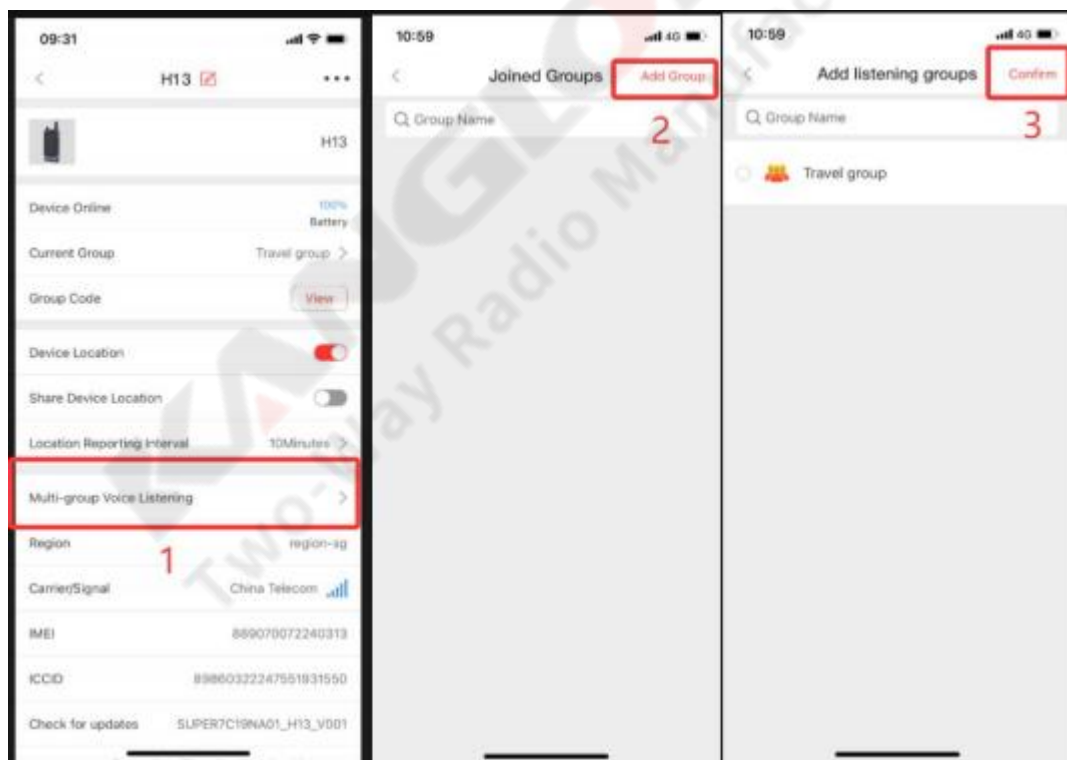
2.2.5 Multi-group voice listening

2.2.5.1. Add listening group

Note: APP users can add groups they want to listen to. (Supports listening to up to 100 groups)

operating steps

Step 1:	Click to listen to multi-group voice
Step 2:	Click to add a group
Step 3:	Select the group to listen to and click OK (Function: Add terminals already joined)

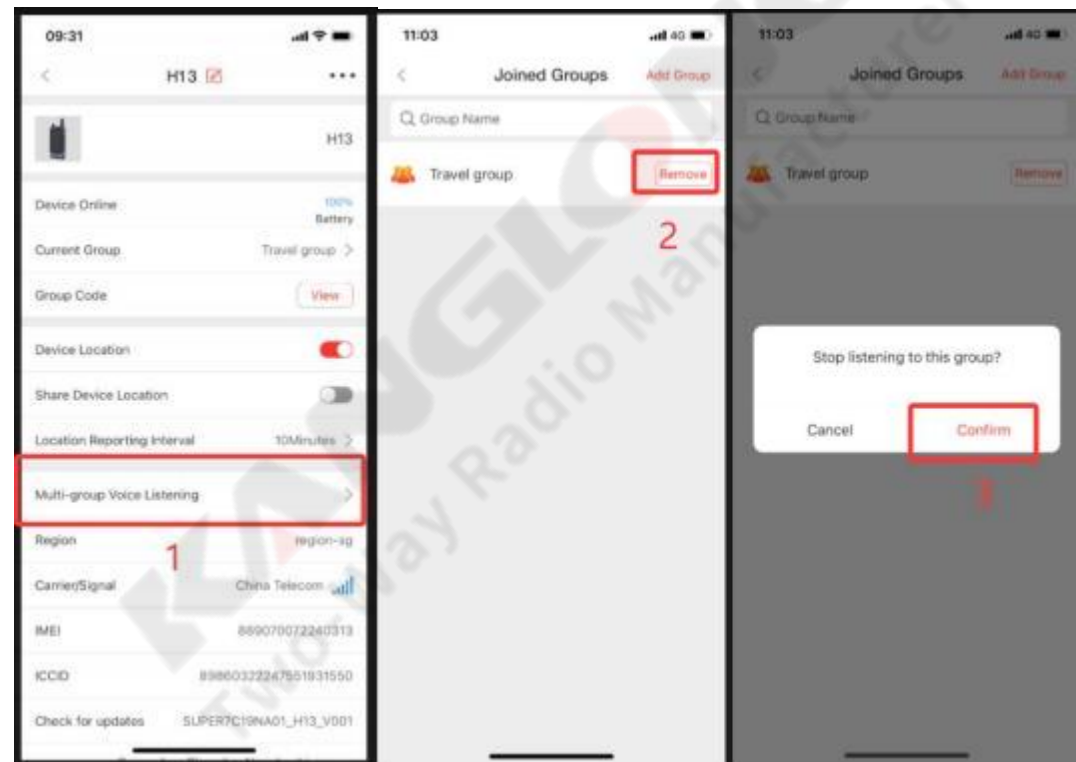


2.2.5.2. Remove listening group

Note: APP users can remove groups they are listening to on their devices.

operating steps :

First Steps :	Click to listen to group voice calls
the second step :	Click Remove after the group name
the third step :	Click OK to remove the listening group

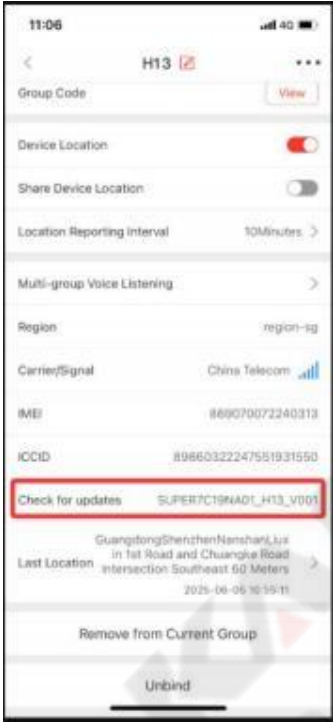



2.2.6 Assist terminal in updating version

Note: Update the software version of the terminal

operating steps :

First Steps :	Click the update function key on the terminal details page
the second step :	Click to update now

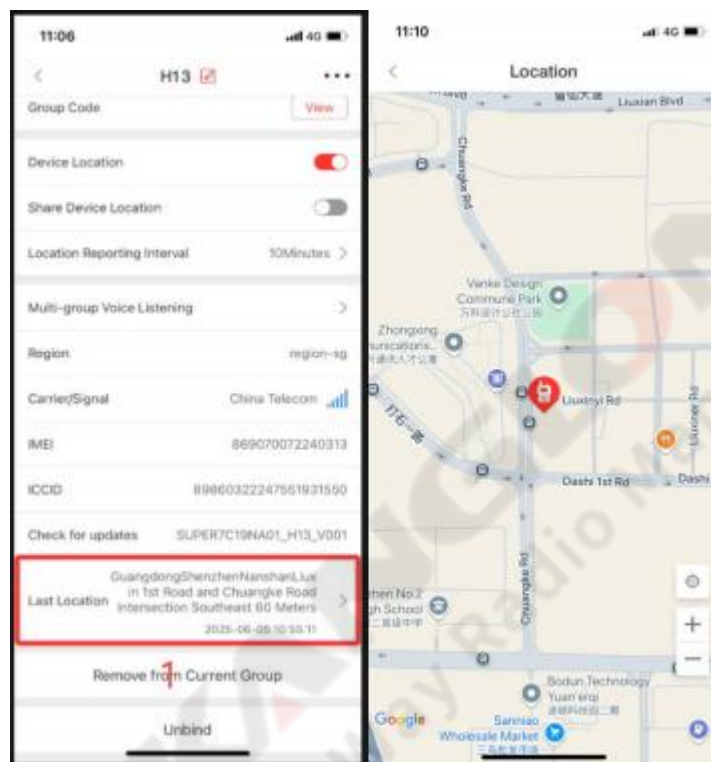



2.2.7 Final Position

Note: Click the last location to view the terminal's most recent upload location.

operating steps :

First Steps: Click the last location to enter the terminal location interface



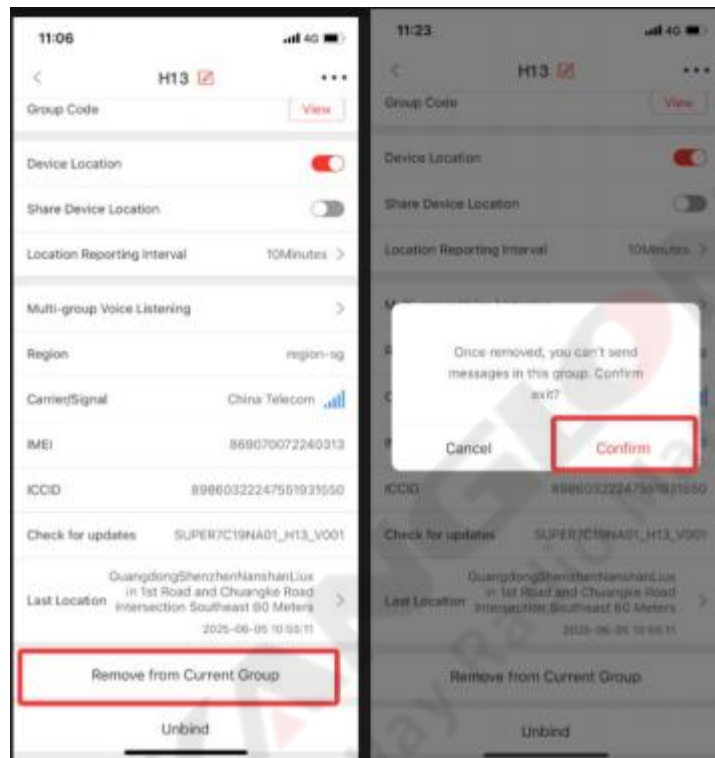
2.2.8 Remove from current group

Note: APP users can remove non-group owner devices from the current group.

operating steps :

First Steps :

Click to leave the current group. Click OK



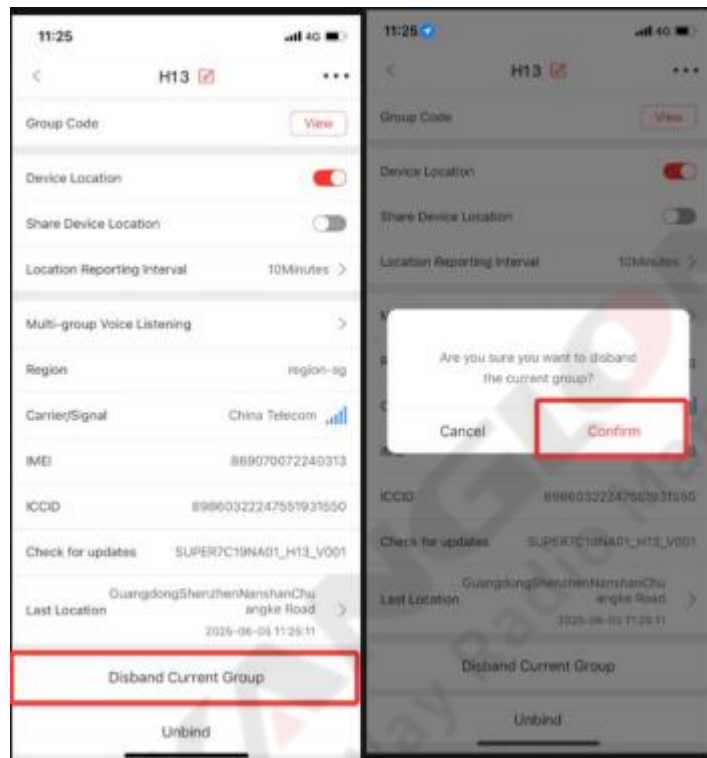
2.2.9 Disband the current group

Note: When a device is the group owner, the app user can remove it from the group.

operating steps :

First Steps :

Click to disband the current group. Click to disband



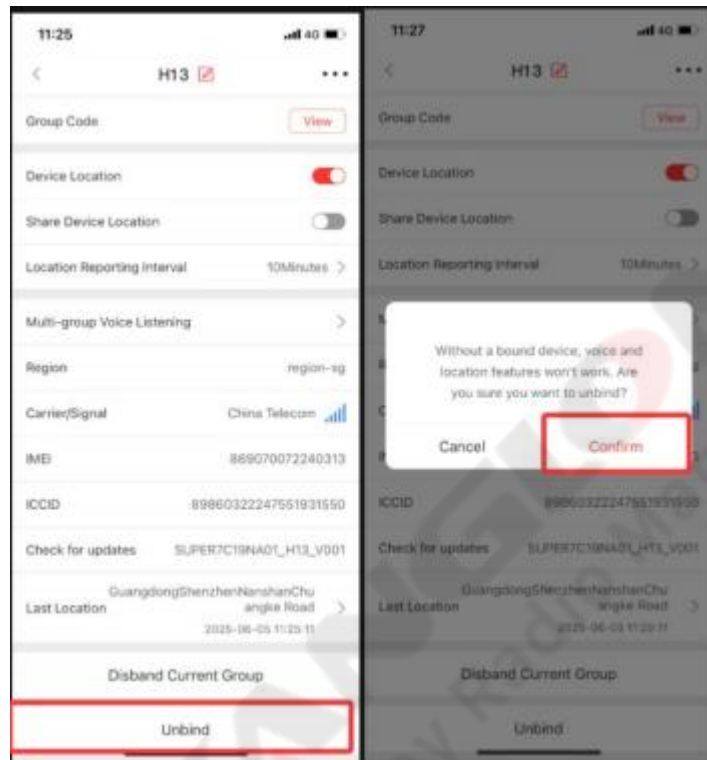
2.2.10 Unbinding

Note: App users can unbind the device

operating steps :

First Steps :

Click to unbind, then click OK




Chapter 3 Grouping

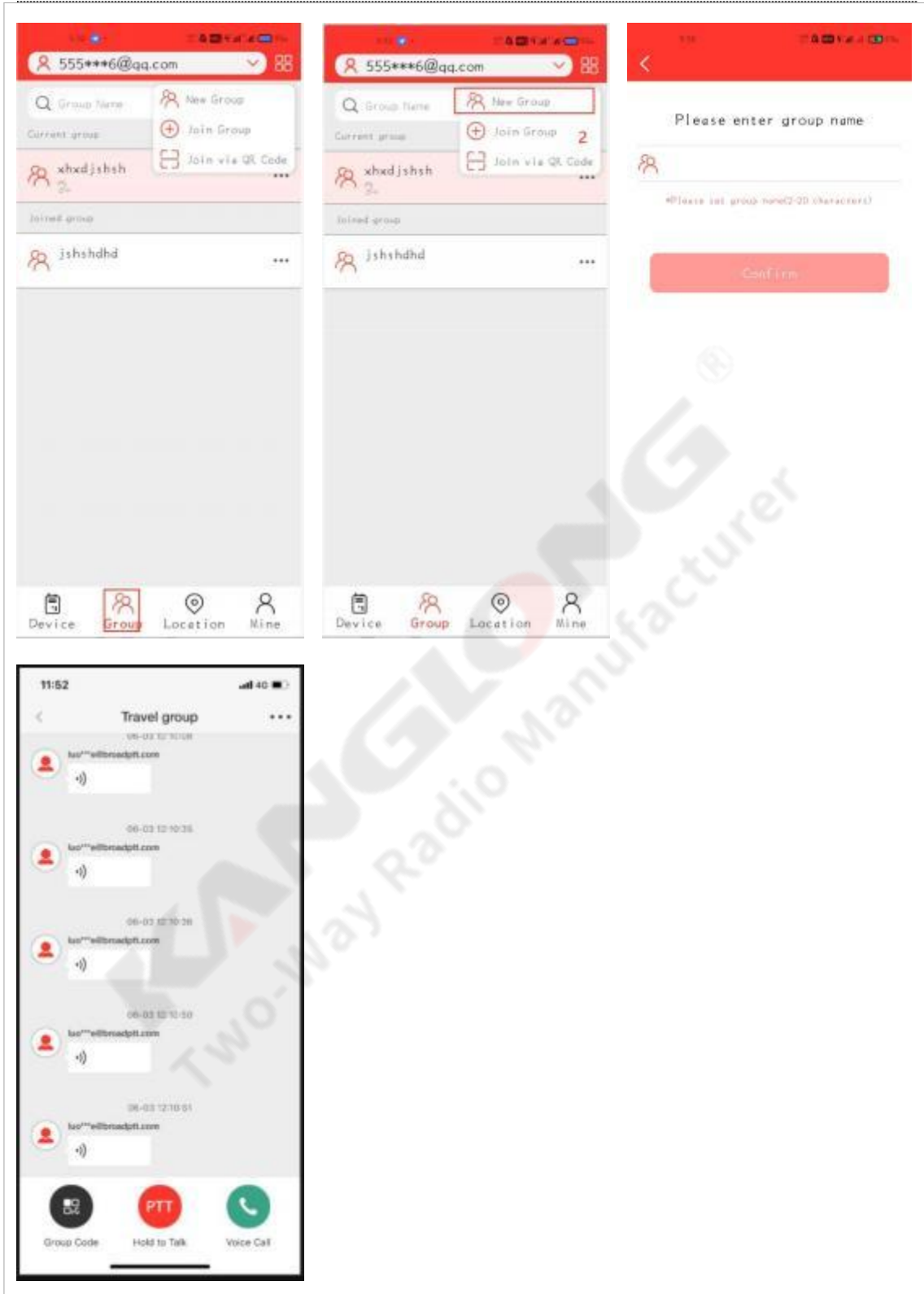
Note: APP users can perform operations such as creating groups, joining groups, and scanning QR codes to join groups on this page. They can also join a group to chat, make calls, edit group information, add listening devices, or change the group leader.

3.1 Create a group

Note: APP users can create new groups. (Groups can have up to 100 members and can be created up to 100 times.)

operating steps :



First Steps :	Click Group at the bottom of the page
the second step :	Click the icon in the top-right corner  , then click Create Group. Enter the group name to access the new group page. You can view the group code by clicking the function keys at the bottom of the page, or hold down to speak and make voice calls.



3.2 Join Group

Note: APP users can enter the group ID to join the group.


operating steps :

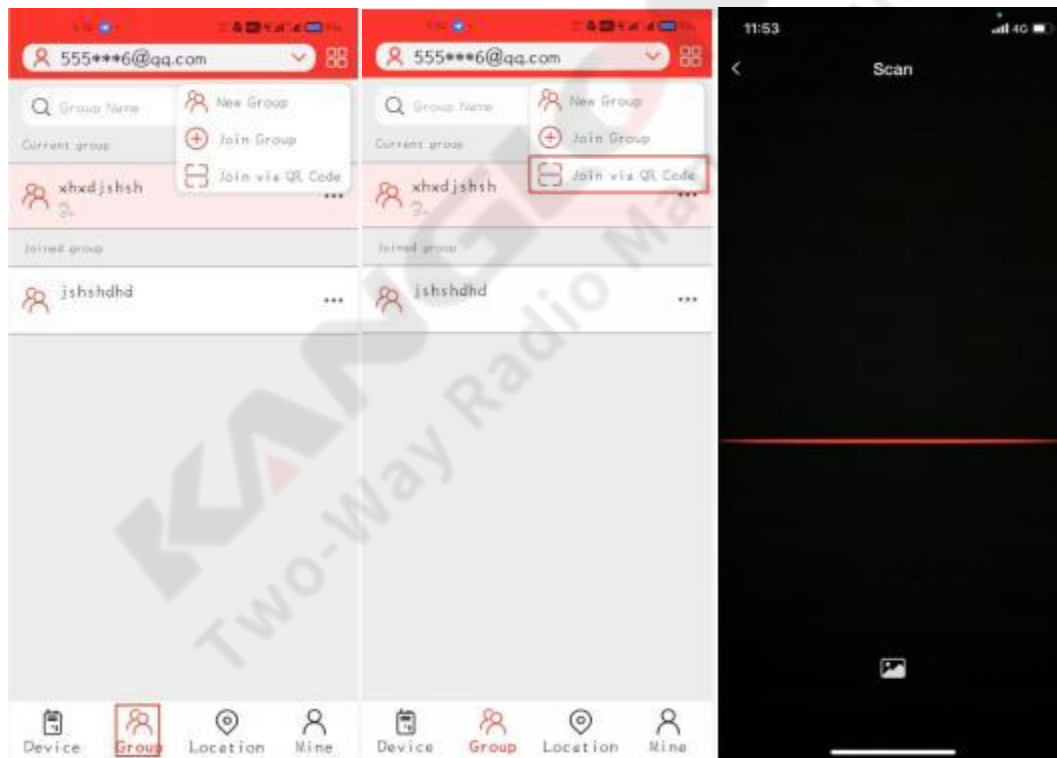
Step 1:	Click Group at the bottom of the page
Step 2:	Click the icon in the top-right corner  , then click Join Group
Step 3:	Enter the group ID to join the group.
	

3.3 Scan to Join Group

Note: APP users can join the group by scanning the group code.

operating steps :

First Steps :	Click the group
the second step:	Click the icon in the upper right corner  , then scan the QR code to join the group
the third step :	Scan the group QR code to join the group. (You can view the "Group Code" on the terminal details page or at the bottom of a group page.)



3.4 Join Group

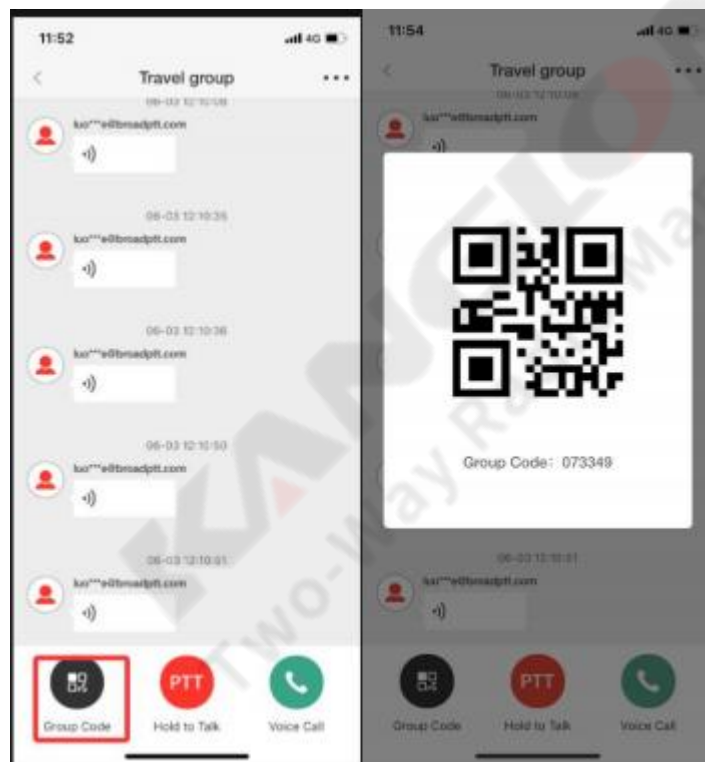
Note: After joining the group, you can view the group code, hold to speak, and make voice calls.

3.4.1 Group Codes

operating steps :

First Steps :

Click the group code to view the current group's code and ID



3.4.2 Hold your breath while speaking

Note: You can speak using PTT

operating steps :

First Steps :	Press and hold the PPT key to send voice intercom
---------------	---

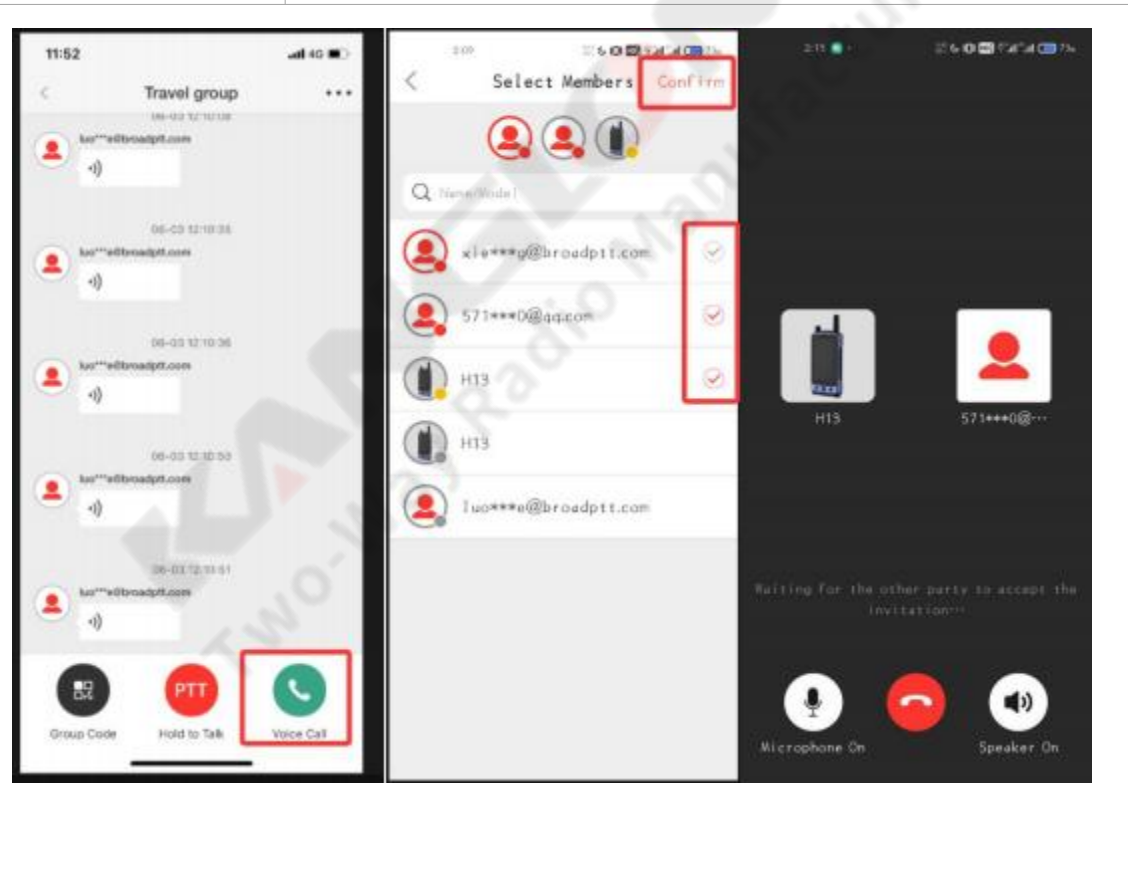


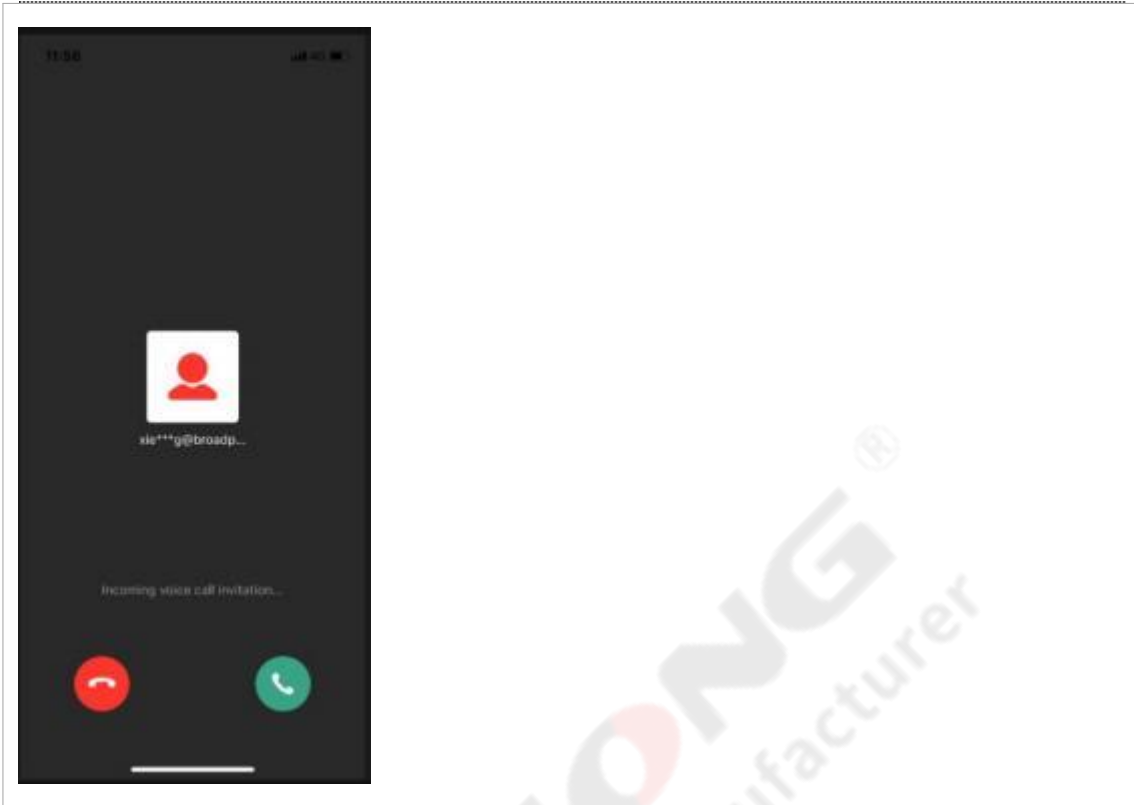
3.4.3 Voice Call

Note: You can select one or more group members for voice calls, and answer or end incoming voice calls.

operating steps :

<p>First Steps :</p>	<p>Click Voice Call, select one or more members, and tap OK to start the call.</p> <p>Accept or hang up voice calls with red/green dot phone icons</p>
----------------------	--





3.4.4 Voice playback

Note: You can view voice messages from the past 30 days in the group chat interface.

operating steps :

First Steps :

View voice messages in the group chat interface



3.4.5 Chat Information

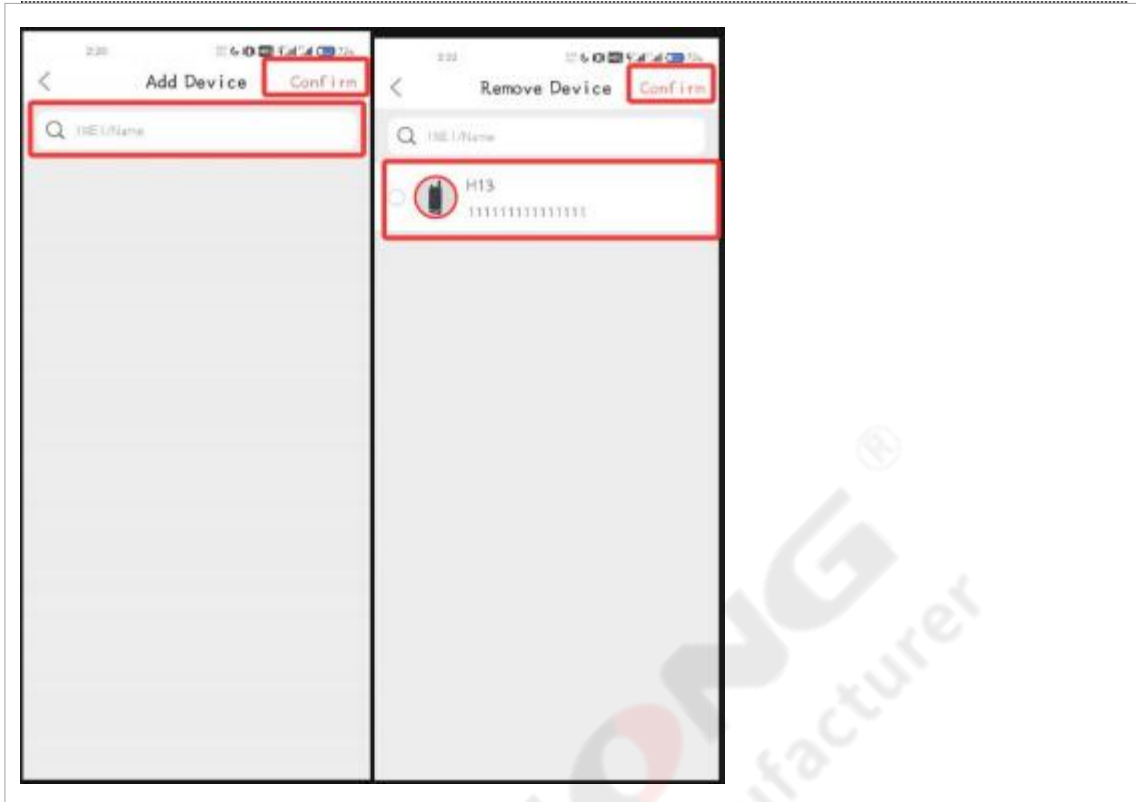
Description: Shows group members, group name, group owner, and online count.

3.4.5.1. Add or remove group members

operating steps :

First Steps :	Click the upper right corner to open the chat message page
the second step :	Click EE to add or remove group members



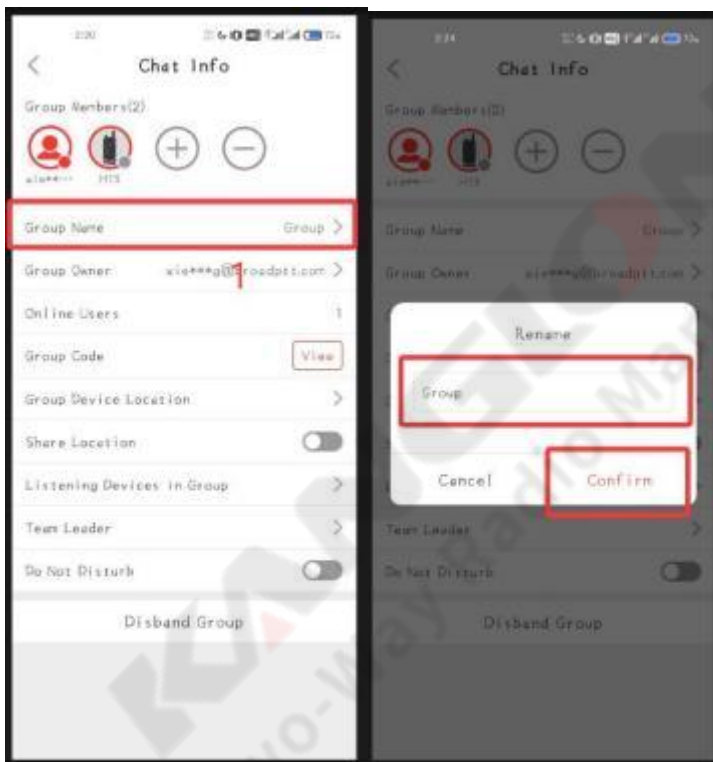


3.4.5.2. Group name modification

Note: You can modify the group name.

operating steps :

First Steps :	Click the group name
the second step :	Modify the group name according to the gray text in the pop-up box

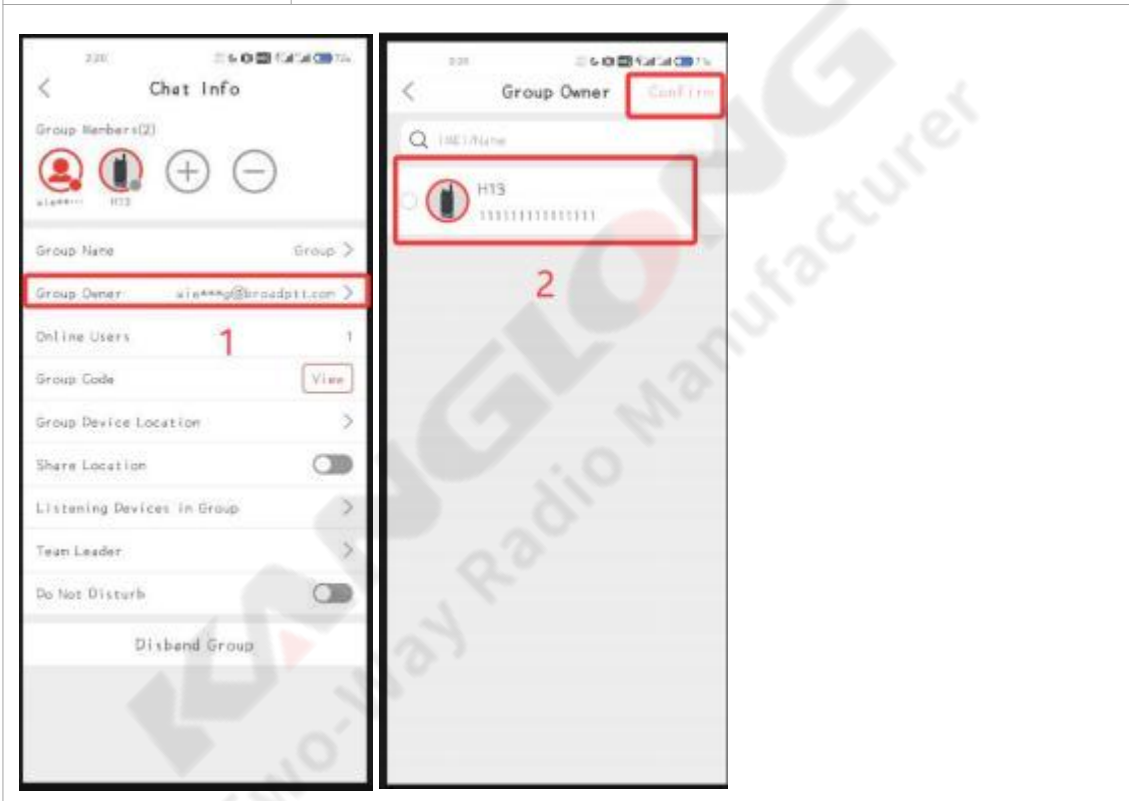


3.4.5.3. Change group owner

Note: You can change the group owner of the current group.

operating steps :

First Steps :	Click the group owner
the second step :	Select a new group owner from the member list



3.4.5.4. View group code

Note: You can view the group code of the current group.

operating steps :

First Steps :

Click View after the group code



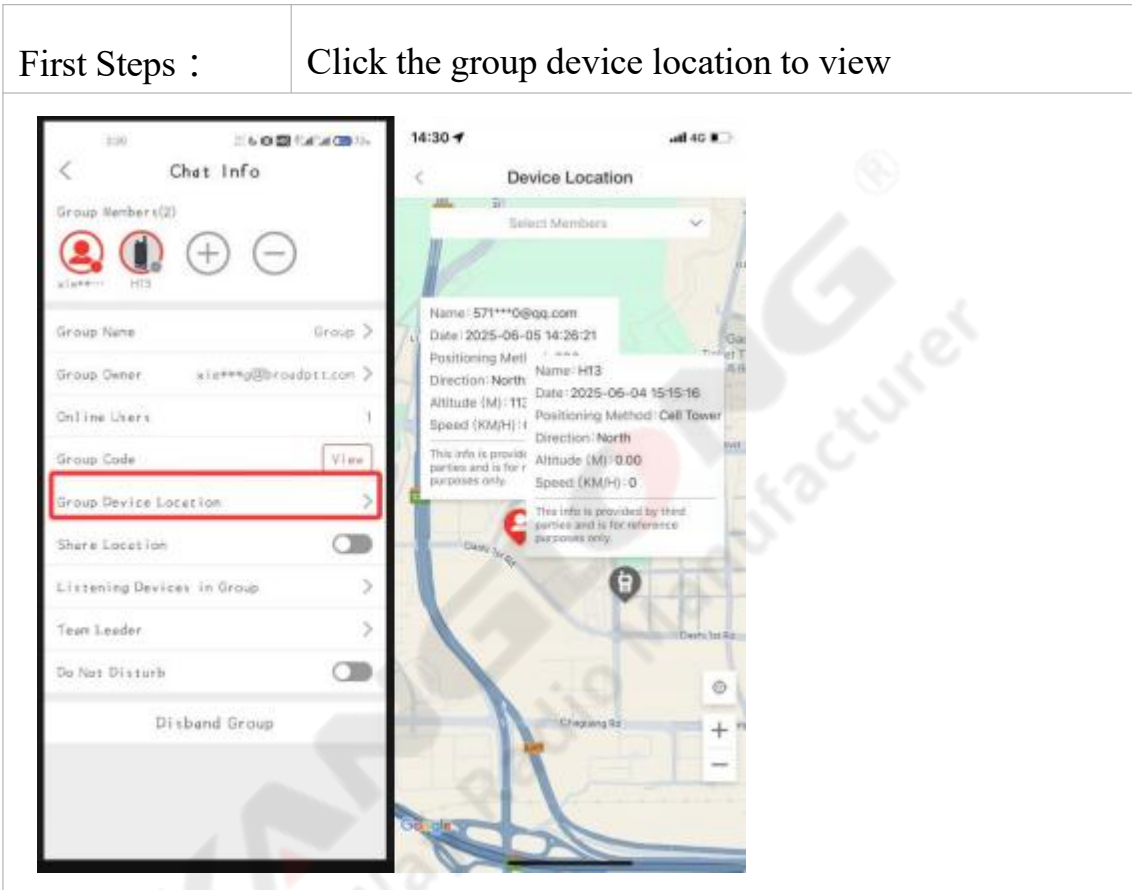
3.4.5.5. Grouping of Equipment Locations

Note: You can view the location of devices in the current group.

operating steps :

First Steps :

Click the group device location to view



3.4.5.6. Location Sharing

Note: You can enable or disable location sharing for APP users. To use this setting, turn on the APP location switch.

operating steps :

First Steps :

Click the button after Location Sharing to turn it on or off



3.4.5.7. Devices that can listen to the group

Note: You can view all devices listening to this group. (APP users automatically listen to all joined groups by default.)

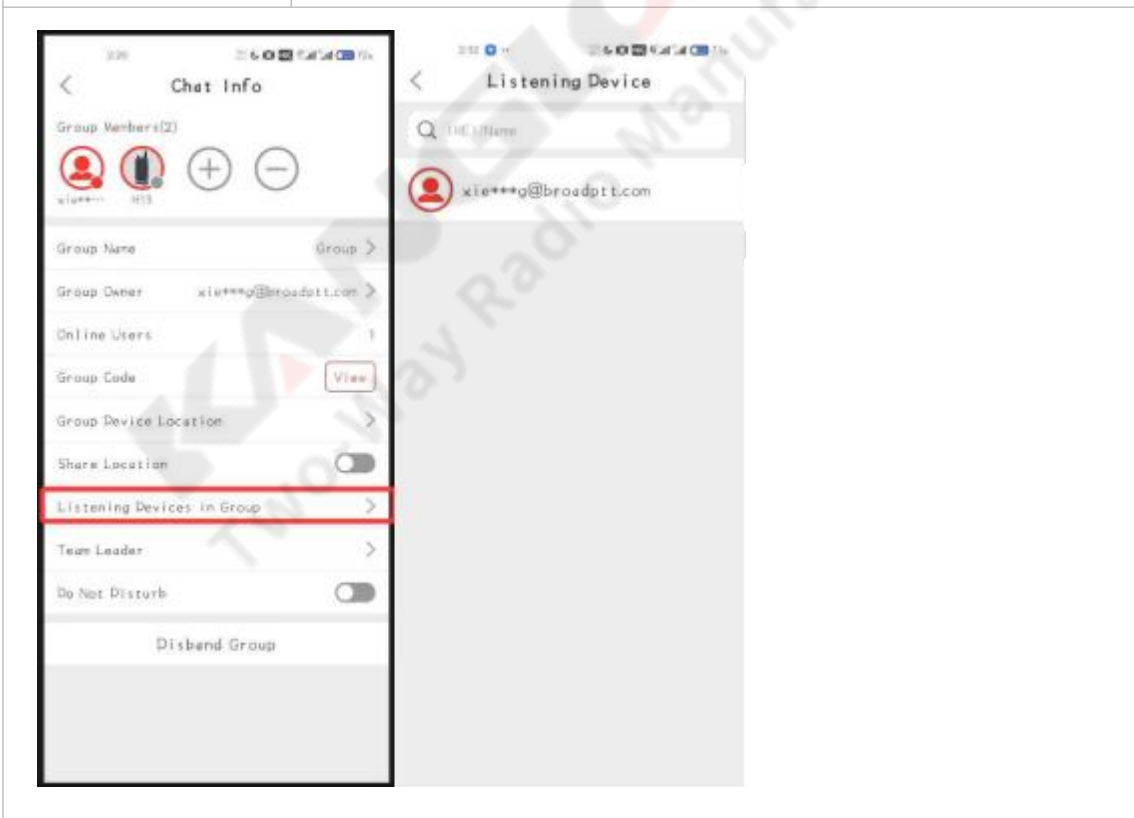
The terminal user does not listen to any group by default. You can add groups to listen to in the terminal details.

cluster)

operating steps :

First Steps :

Click to listen to the group's terminal and view the content

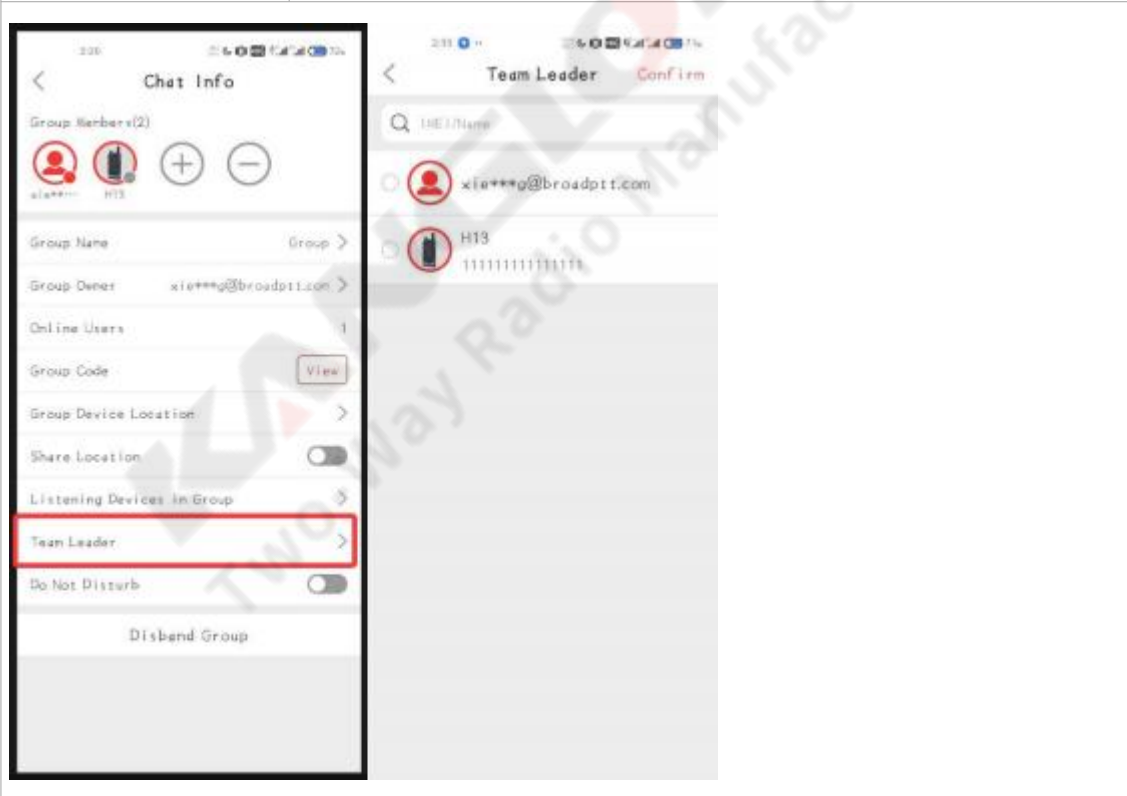


3.4.5.8. Team Leader

Note: You can select or replace the current group leader. (After setting the leader, the leader can communicate with group members, but members cannot communicate with each other. The group voice call function remains unaffected by the leader settings and allows any member to call each other.)

operating

Step 1:	Meet the leader
Step 2:	Select or replace teams in the list



3.4.5.9. Do Not Disturb

Note: You can enable or disable Do Not Disturb. When enabled, the device will receive voice messages from the listening group but not the voice broadcast of intercom messages. Voice calls will still be received.

operating steps :

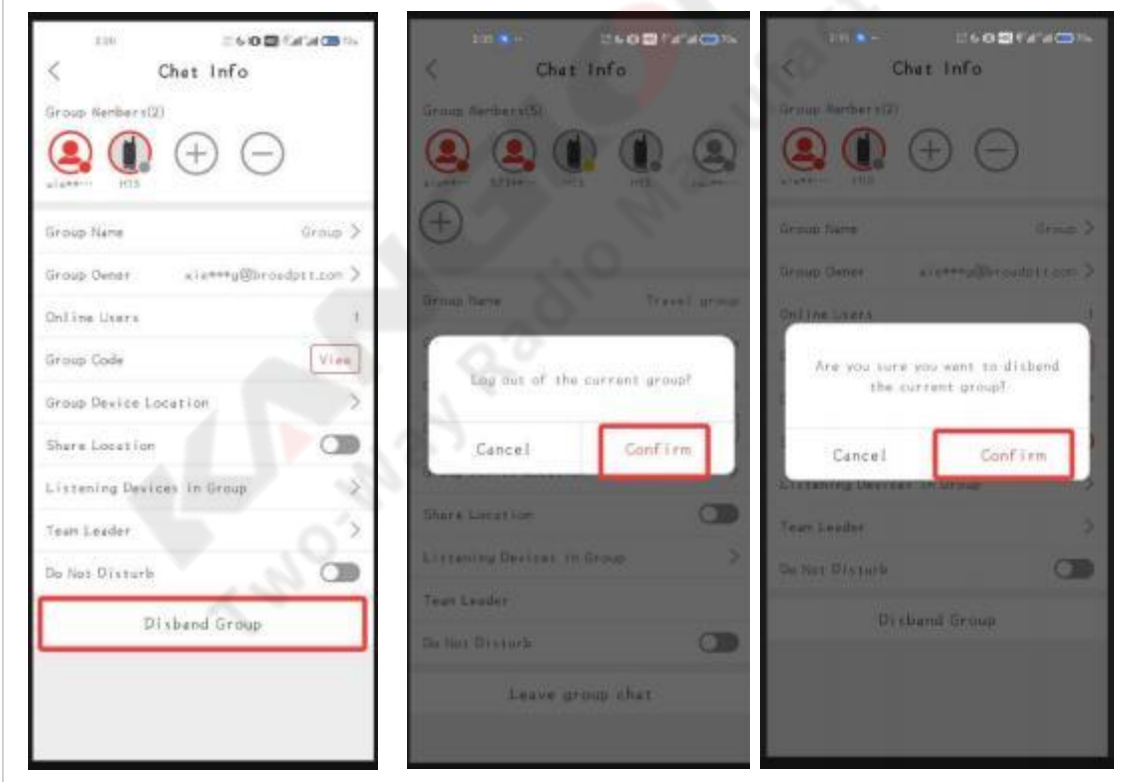
First Steps :	Click Do Not Disturb to turn it on or off
	

3.4.5.10. Disband/Exit Group

Note: You can dissolve or leave the group. If the "group owner" is an APP user or a device linked to an APP user, you can dissolve the group. If the "group owner" is not an APP user or a device linked to an APP user, you can only leave the group.

operating steps :

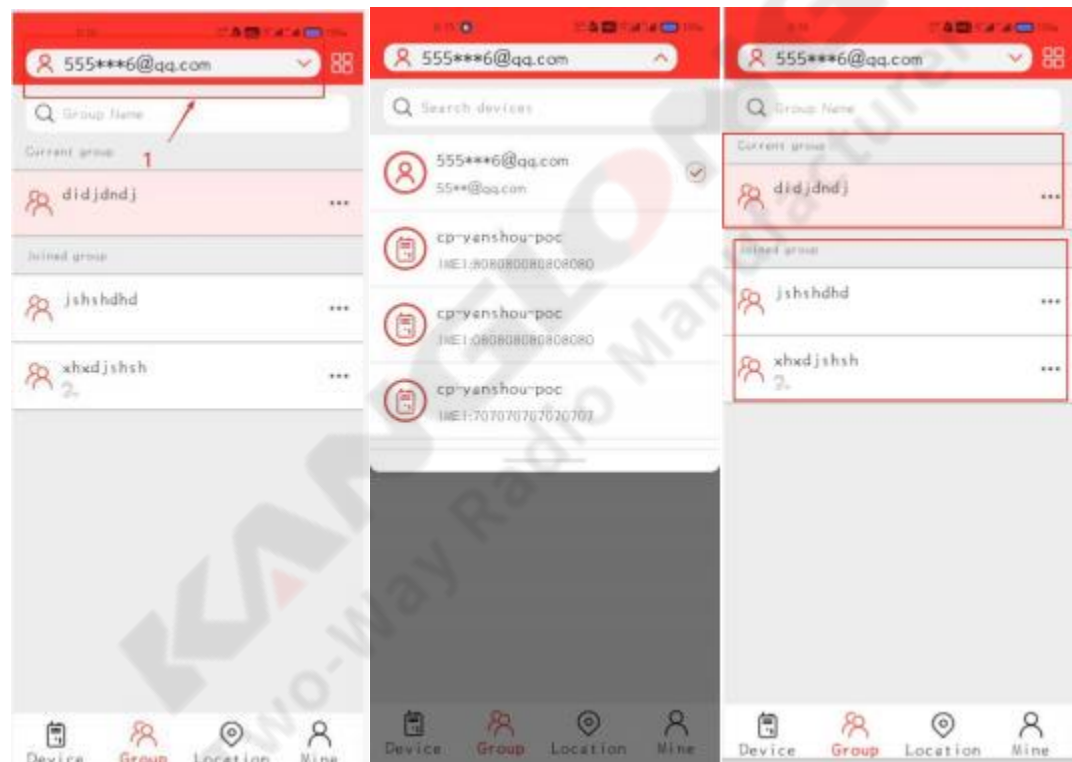
First Steps :	Click to leave the group
The second step:	Click to confirm group dissolution or exit



3.5 Equipment Switching



Note: Switch to view the current group of different devices and all joined groups

First Steps	Tap the top drop-down box
the second step	Select the device you want to view from the pop-up list
the third step	You can see the group the device is currently in and all groups it has joined



3.6 Group Operation

Note: This feature allows quick group operations. Refer to the chat message for specific functions and operations.

First Steps	click 
the second step	Select the required features
	


Chapter 4 Location

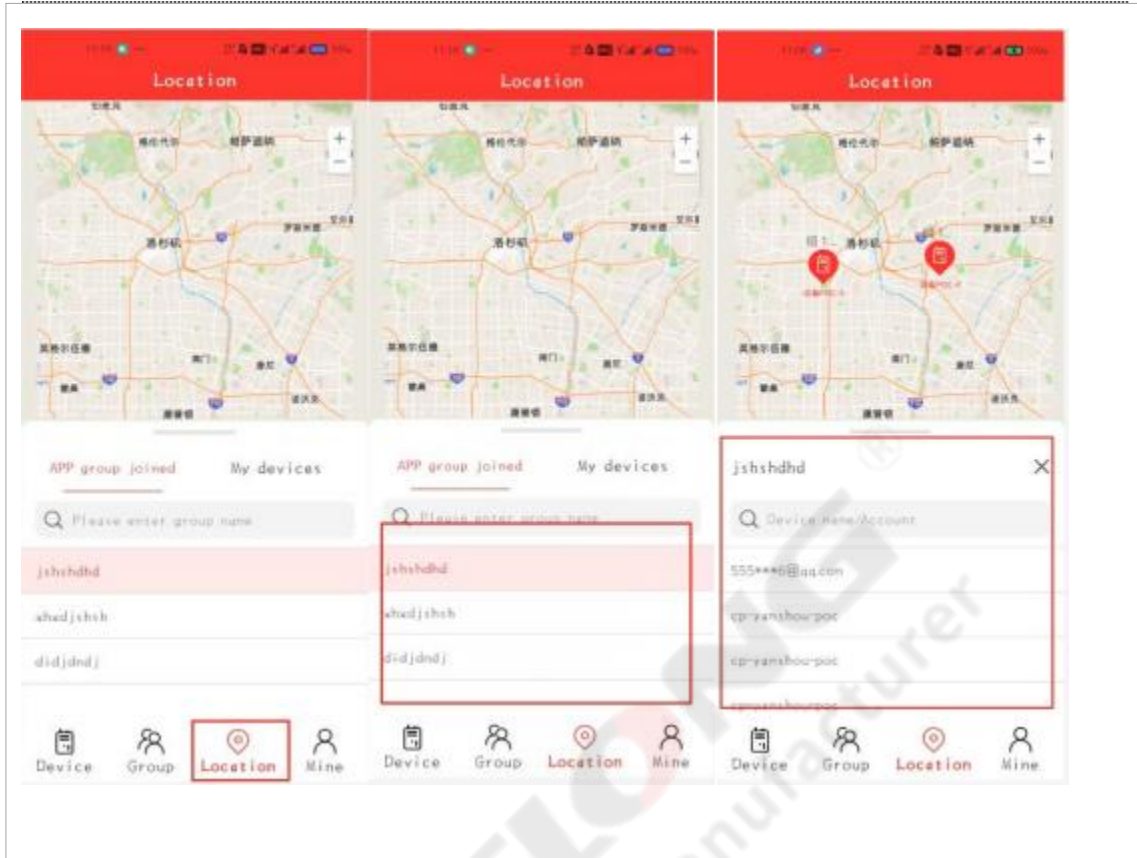
Note: APP users can view device location information on this page. The platform supports GPS and cell tower positioning.

4.1 Location

Note: APP users can view the terminal's location information on this page, including name, date, positioning method, direction, altitude, and speed. For users who upload location data or have disabled the location switch, the map will display the focal point as Beijing Tiananmen Square.

operating steps :

First Steps :	Click to position
the second step :	Select or search for groups
the third step :	Click Select Members or enter the user name to search. Click Search.
Step 4:	Click + to zoom in, click to zoom out 



4.2 Switch to show member location

Note: Select the Device tab to switch the member's location display.

operating steps :



First Steps :	Click Location-My Devices to select the device you want to view
the second step	View device details

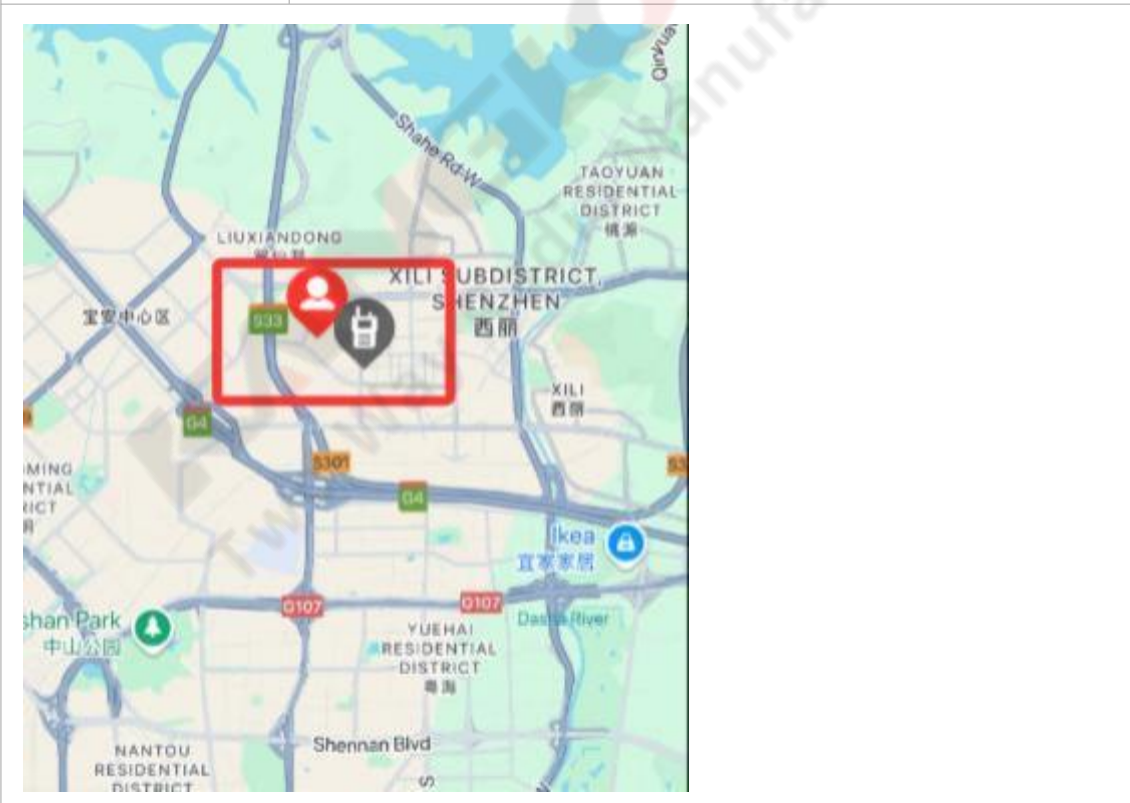


4.3 Other Information

Note: The terminal's status is indicated by different icons on the map, reflecting its location.

operating steps :

	<p>APP user: Red indicates online, gray indicates offline, yellow indicates online but not in the group</p>
	<p>End users: Red indicates online, gray indicates offline, yellow indicates online but not in the group</p>



Chapter 5 Settings

Note: APP users can set up their accounts on this page.

5.1 Location

Note: APP users can edit their information, view the user agreement, privacy policy, permission agreement, about us, log out, and sign out on this page.

operating steps :

First Steps :

Click Settings to open the interface

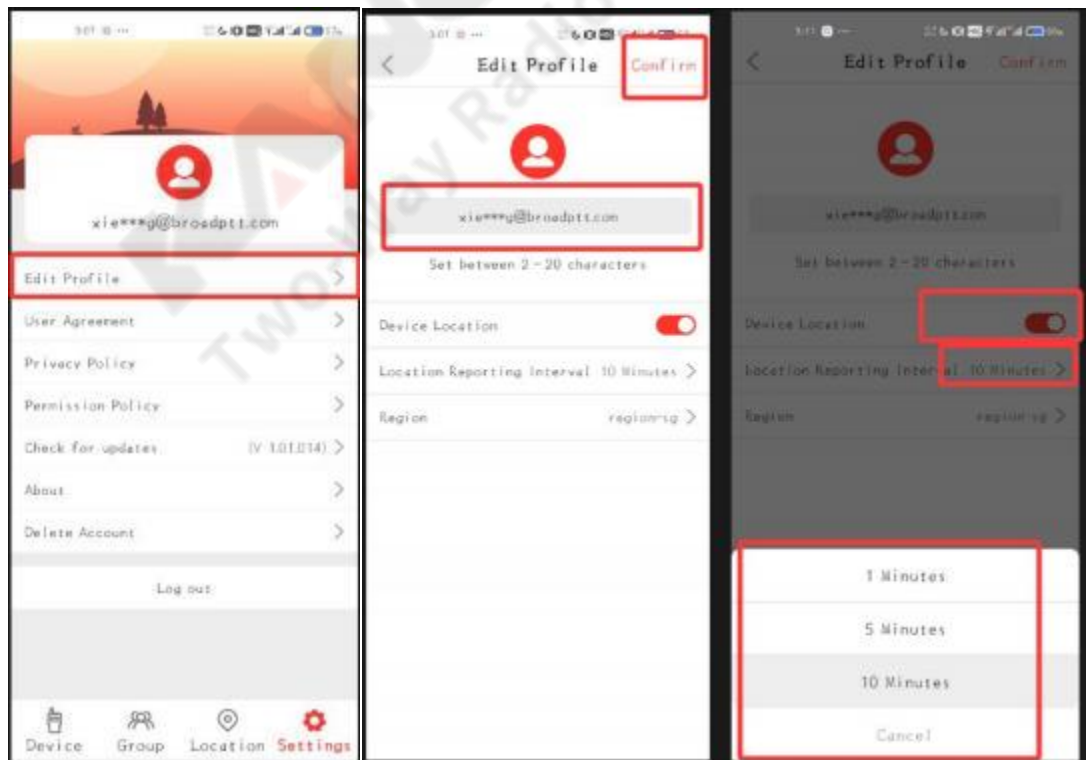


5.2 Editing Materials

Note: APP users can view terminal editing information (user name, terminal location switch, and location reporting interval) on this page.

operating steps :

First Steps :	Edit information
the second step :	Enter your personal nickname
the third step :	Click the location switch to turn it on or off. When on, the app reports location data; when off, it does not.
Step 4:	Location report intervals: 1 minute, 5 minutes, 10 minutes, which refers to how often the APP reports location

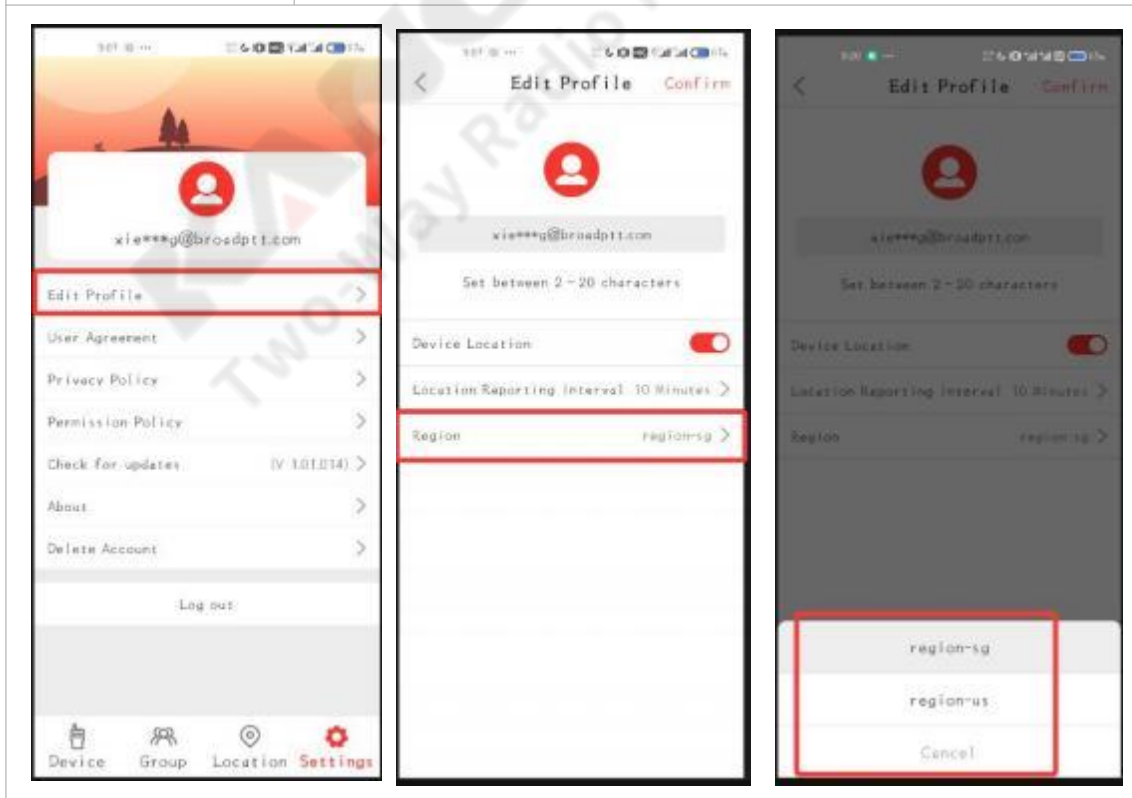


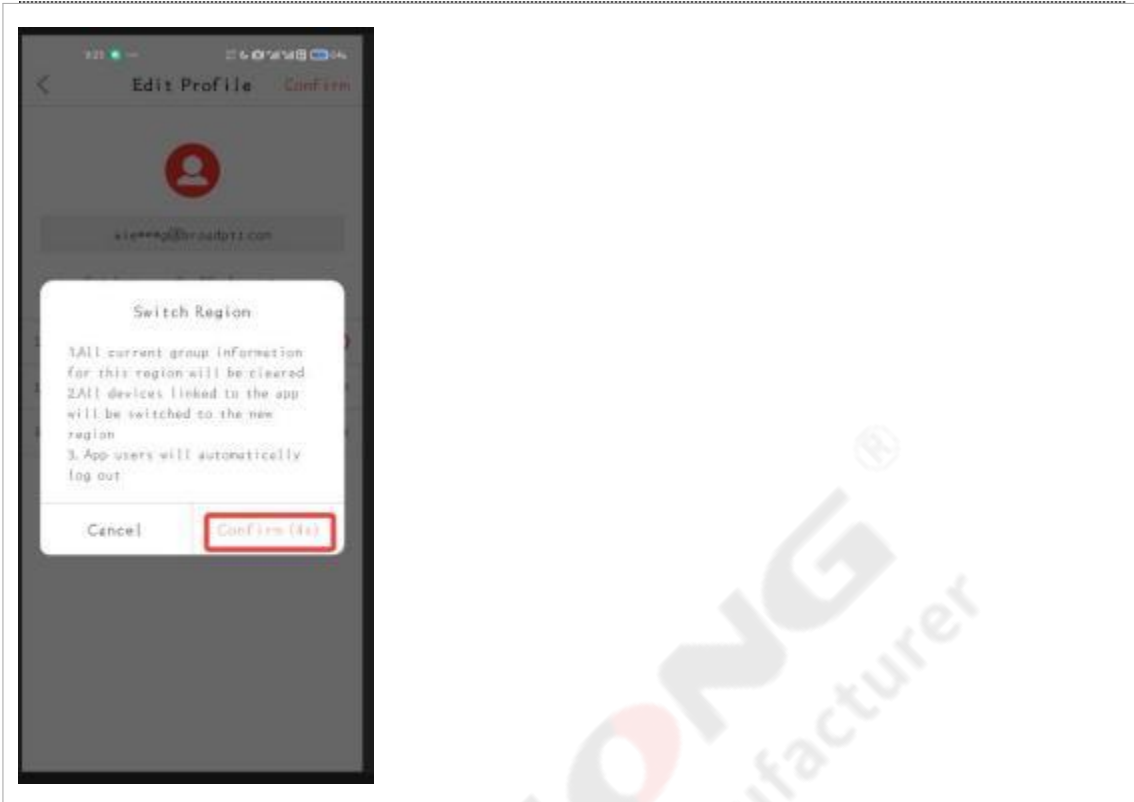
5.3 Switching Zone

Note: APP users can switch the device region on this page to enable use in the new area.

operating steps :

First Steps :	Edit information
the second step :	Click area
the third step :	Switch regions in the pop-up selection box
Step 4:	After selecting the area to switch, wait 5 seconds to confirm the change, as this operation transfers a large amount of data. Ensure the user does not make an error.





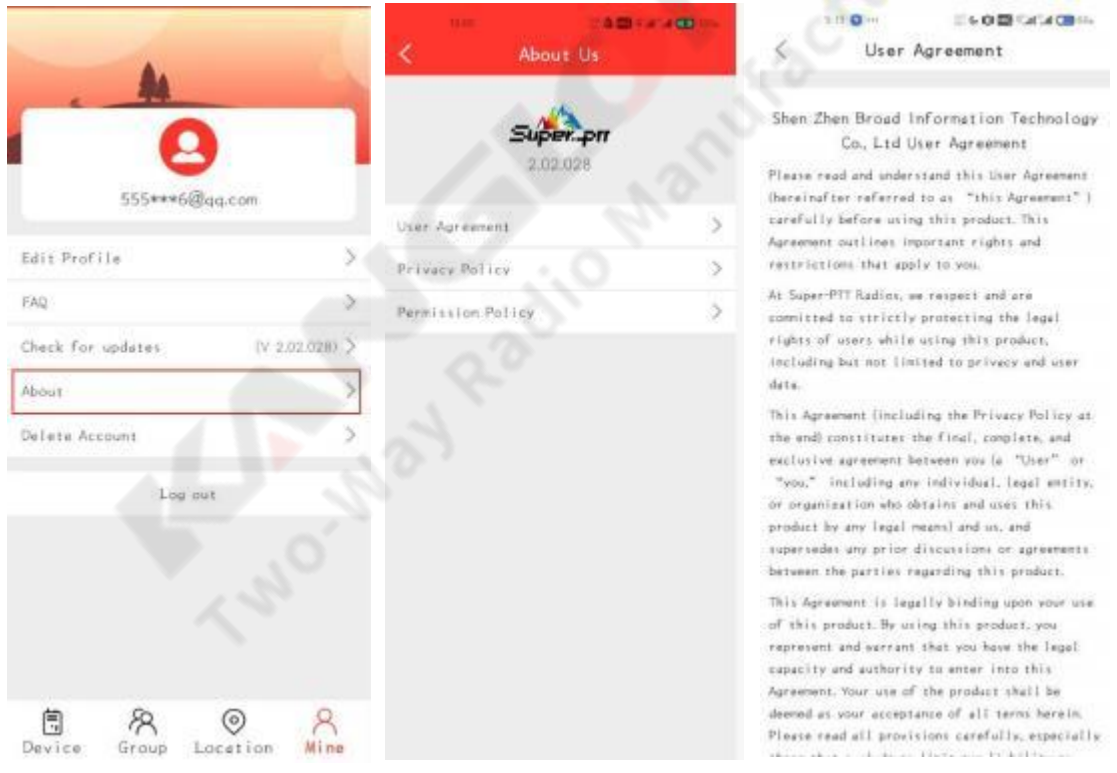
KANGLONG®
Two-Way Radio Manufacturer

5.4 User Agreement and Others

Note: APP users can view the User Agreement, Privacy Policy, and Permission Agreement on this page.

operating steps :

First Steps :	Click to view the user agreement
the second step :	View Privacy Policy
the third step :	View permissions agreement



The image contains three screenshots from the Super.PTT mobile application. The first screenshot shows the 'About Us' screen with the 'About' option highlighted in a red box. The second screenshot shows the 'About Us' screen with the 'User Agreement', 'Privacy Policy', and 'Permission Policy' options visible. The third screenshot shows the 'User Agreement' text screen, which includes the following text:

Shen.Zhen Broad Information Technology Co., Ltd User Agreement

Please read and understand this User Agreement (hereinafter referred to as "this Agreement") carefully before using this product. This Agreement outlines important rights and restrictions that apply to you.

At Super-PTT Radios, we respect and are committed to strictly protecting the legal rights of users while using this product, including but not limited to privacy and user data.

This Agreement (including the Privacy Policy at the end) constitutes the final, complete, and exclusive agreement between you (a "User" or "you," including any individual, legal entity, or organization who obtains and uses this product by any legal means) and us, and supersedes any prior discussions or agreements between the parties regarding this product.

This Agreement is legally binding upon your use of this product. By using this product, you represent and warrant that you have the legal capacity and authority to enter into this Agreement. Your use of the product shall be deemed as your acceptance of all terms herein. Please read all provisions carefully, especially

Privacy Policy

Last Updated: October 18, 2024
Effective Date: October 18, 2024

This Privacy Policy applies to the Super-PTT Radios app (hereinafter referred to as "this App"), a voice-based real-time communication service provided by Shen Zhen Broad Information Technology Co., Ltd. We are committed to protecting your privacy. This App will use and disclose your personal information in accordance with this Privacy Policy and handle your data with a high degree of diligence and care. Except as otherwise stated in this policy or with your prior consent, your personal information will not be shared or disclosed to third parties. By using this App and agreeing to our Terms of Service, you acknowledge and accept the practices described in this Privacy Policy. If you have any questions, feedback, or suggestions, you may contact us using the details provided at the end of this policy. This Privacy Policy applies to the Super-PTT Radios app (hereinafter referred to as "this App"), a voice-based real-time communication service provided by Shen Zhen Broad Information Technology Co., Ltd. We are committed to protecting your privacy. This App will use and disclose your personal information in

Permission Policy

Welcome to Super-PTT Radios! We value your privacy and are committed to protecting your personal information in accordance with applicable laws and regulations. We may request the following permissions to deliver key features of our service. You have the right to refuse or revoke these permissions at any time.

Bluetooth Permission

Used when connecting to Bluetooth-enabled devices for pairing and retrieving hardware performance data. Note: On Android 6.0 and above, Bluetooth functionality requires location access to be enabled. Please refer to the Location Permission section below.

Location Permission

Required by Android systems (6.0 and above) to enable Bluetooth functionality. We only request location access for the purpose stated above; We do not collect, store, or use your precise location data.

Camera & Photo Library

Used to:

- Update your profile photo
- Scan QR codes to bind a device
- Join groups via QR code

KANGGLONG[®]
Two-Way Radio Manufacturer

5.5 Update Detection

Note: APP users can check the latest server version on this page. Click Upgrade to update the app to the latest version.

operating steps :

First Steps :


Click to test updates. If this is the latest version, it will display "Already the latest version".



5.6 Regarding

Note: APP users can view the current version information on this page.

operating steps :

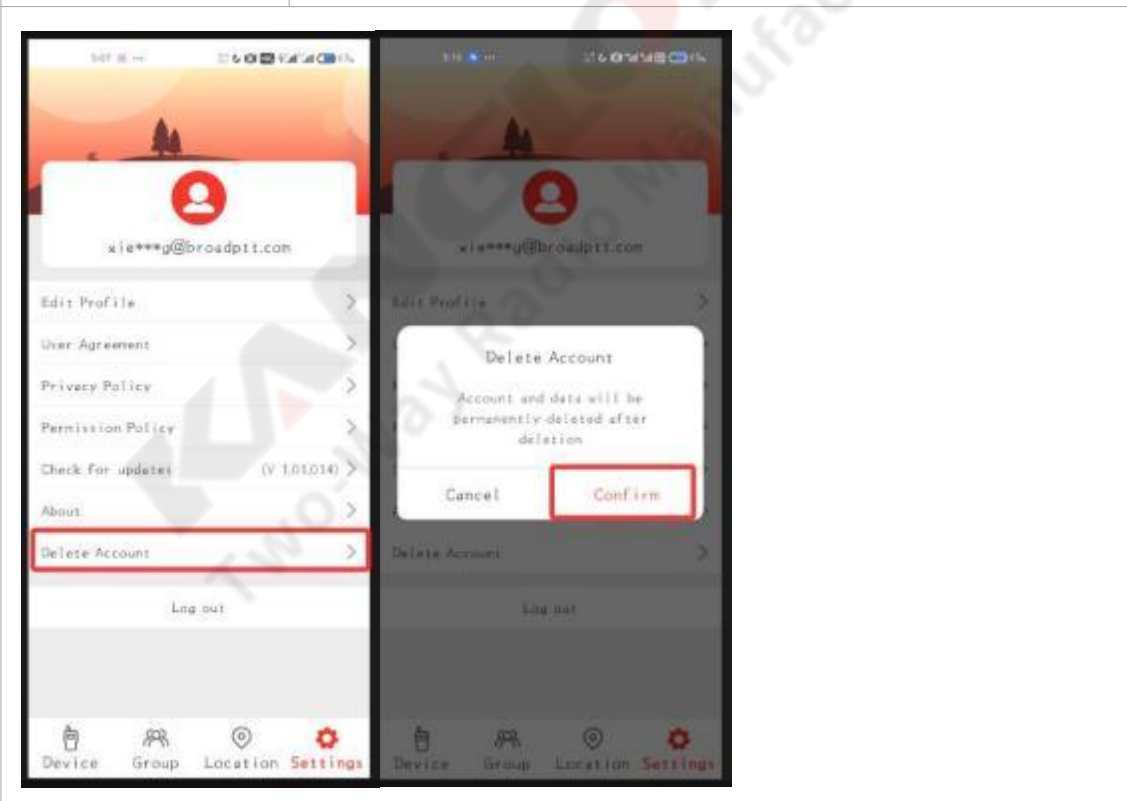
First Steps :	Click to view version information
	

5.7 Account cancellation

Note: App users can log out of their accounts on this page, and the account data will be permanently deleted.

operating steps :

First Steps :	Click to cancel account
the second step:	The pop-up message states, "Logging out will clear data and delete your account." Click OK to permanently delete your account data. Click Cancel to cancel the operation.



5.8 Sign out

Note: APP users can log out from this page.

operating steps :

First Steps :

Click to exit login and return to the APP login screen

